

**AGNES ST
November 30, 2024**

**between
to**

**GLANFORD AVE AND BROADWAY ST
December 6, 2024**



The data presented here is for information purposes only and should not be considered authoritative for construction, geotechnical, engineering, navigational, legal, or other site-specific uses. Please note that small datasets may skew the calculation of the hourly 85th percentile speed. The information shared is owned by the Transportation Division of the Engineering Department at the District of Saanich. Accuracy is not guaranteed.

This document contains:

Overview

Vehicle Volume Summary

Vehicle Speed Summary

Vehicle Classification Summary

Overview

AGNES ST
November 30, 2024

between
to

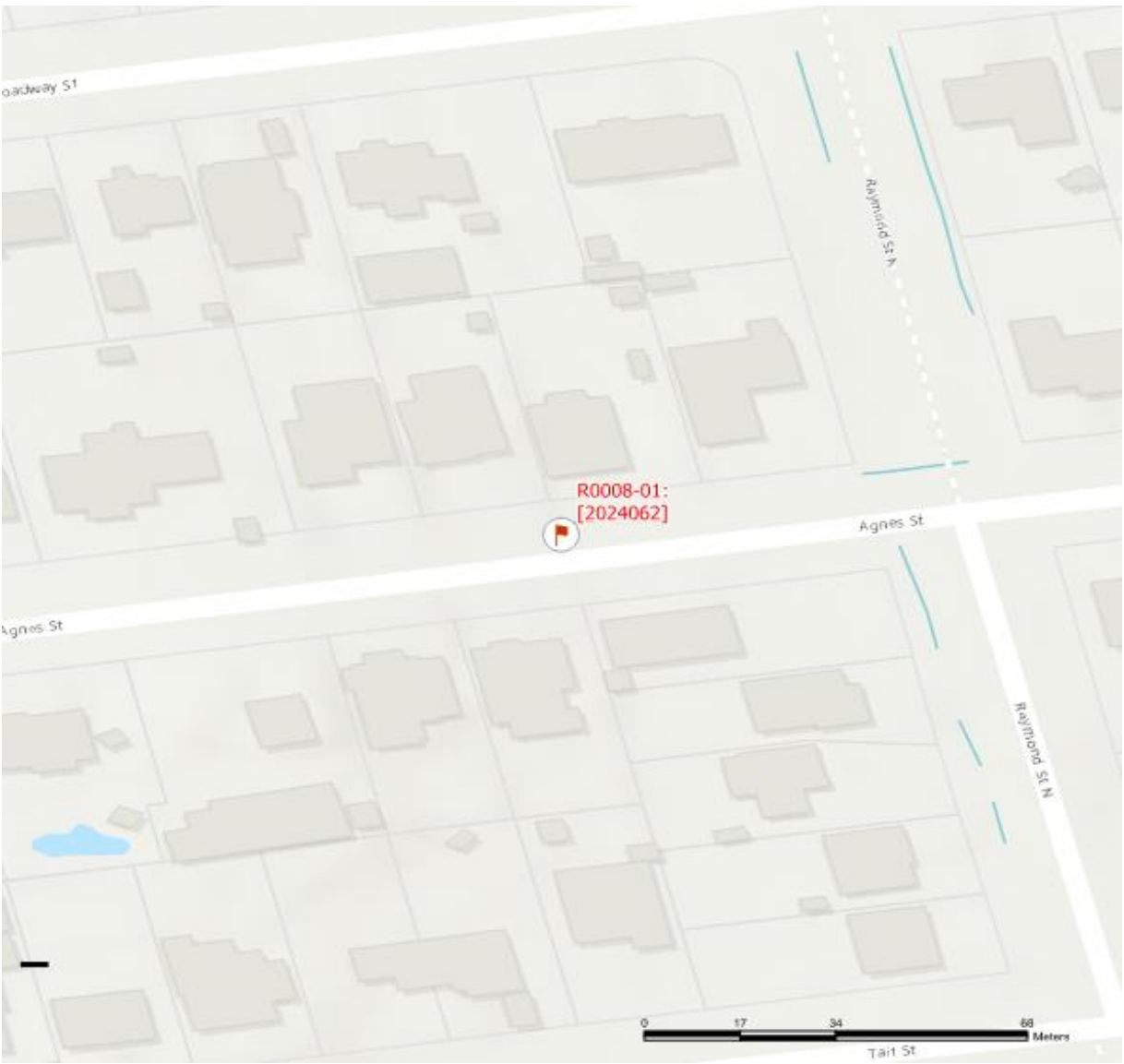
GLANFORD AVE AND BROADWAY ST
December 6, 2024



Location Map

Metric	EB	WB	Combined
Average Traffic Volume (weekdays)	271	272	543
Average Speed (km/h)	34	35	35

Weather Information	Value
Minimum Temperature	3 °C
Maximum Temperature	11 °C
Total Precipitation	15 mm



Vehicle Volume Summary



Start Date: 11/30/2024
Start Time: 12:00 AM
Station ID: R0008-01

Location: AGNES ST Between GLANFORD AVE AND BROADWAY ST

DATE:	December 2, 2024		December 3, 2024		December 4, 2024		December 5, 2024		December 6, 2024					
	MON		TUE		WED		THURS		FRI		WK AVG		WK AVG	HOURLY
Time:	EB	WB	EB	WB	EB	WB	EB	WB	EB	WB	EB	WB	CH 1+2	%
12-1 AM	0	0	0	1	0	2	0	1	0	1	0	1	1	0.2%
1-2 AM	2	0	1	0	1	0	1	0	0	1	1	0	1	0.2%
2-3 AM	0	0	0	1	0	1	2	1	1	1	1	1	1	0.3%
3-4 AM	0	0	0	0	0	1	0	0	0	1	0	0	0	0.1%
4-5 AM	1	1	1	1	1	0	1	1	1	1	1	1	2	0.3%
5-6 AM	0	0	2	1	0	0	0	0	0	0	0	0	1	0.1%
6-7 AM	2	3	2	2	4	2	4	2	0	4	2	3	5	0.9%
7-8 AM	20	10	26	15	25	4	15	5	17	12	21	9	30	5.5%
8-9 AM	76	47	77	38	60	27	89	54	72	39	75	41	116	21.3%
9-10 AM	9	9	20	6	28	24	7	7	10	11	15	11	26	4.8%
10-11 AM	12	11	9	9	13	9	14	11	11	7	12	9	21	3.9%
11-12 PM	8	9	10	11	11	10	11	13	13	10	11	11	21	3.9%
12-1 PM	9	9	18	12	17	10	18	13	10	10	14	11	25	4.6%
1-2 PM	10	4	15	15	12	12	6	11	16	13	12	11	23	4.2%
2-3 PM	22	19	27	21	26	24	20	20	32	25	25	22	47	8.7%
3-4 PM	16	45	23	52	29	51	25	43	23	48	23	48	71	13.1%
4-5 PM	12	26	20	35	13	26	18	32	9	29	14	30	44	8.1%
5-6 PM	10	17	22	23	6	14	27	18	16	25	16	19	36	6.6%
6-7 PM	10	11	10	10	8	10	11	19	5	7	9	11	20	3.7%
7-8 PM	7	8	8	11	11	15	13	13	4	8	9	11	20	3.6%
8-9 PM	9	3	5	12	7	8	3	8	3	8	5	8	13	2.4%
9-10 PM	2	6	4	13	2	12	3	7	2	2	3	8	11	2.0%
10-11 PM	2	3	1	3	1	4	2	2	2	3	2	3	5	0.8%
11-12 AM	0	1	0	4	1	3	0	2	1	4	0	3	3	0.6%
LANES	239	242	301	296	276	269	290	283	248	270	271	272	543	100.0%
TOTAL	481		597		545		573		518		543			
	MON		TUE		WED		THURS		FRI		WK AVG			
PEAK HOUR							TOTAL VEHICLES-PEAK PERIODS				2 HOUR PEAK INTERVALS			
MAX. 7 - 9 am PEAK HOUR		116	➡	21.3%	between	8-9 AM	272 ➡ 6 HR TOTAL		2 HR AM (7 - 9 AM)					
MAX. 7 - 11 am PEAK HOUR		116	➡	21.3%	between	8-9 AM	225 ➡ 4 HR TOTAL		VEH / HR					
MAX. 11 am - 1 pm PEAK		25	➡	4.6%	between	12-1 PM	24 HOUR FACTORS		2 HR NOON (11 - 1 PM)					
MAX. 11 am - 3 pm PEAK		47	➡	8.7%	between	2-3 PM			VEH / HR					
MAX. 4 - 6 pm PEAK HOUR		44	➡	8.1%	between	4-5 PM			2 HR PM (4 - 6 PM)					
MAX. 3 - 6 pm PEAK HOUR		71	➡	13.1%	between	3-4 PM	2.00 ➡ 6-24 HR FACT.		VEH / HR					
							2.41 ➡ 4-24 HR FACT.		2 HR %					
									2 HR %					
									2 HR %					
									2 HR %					
									2 HR %					
									2 HR %					
									2 HR %					
									2 HR %					
									2 HR %					
									2 HR %					
									2 HR %					
									2 HR %					
									2 HR %					
									2 HR %					
									2 HR %					
									2 HR %					
									2 HR %					
									2 HR %					
									2 HR %					
									2 HR %					
									2 HR %					
									2 HR %					
									2 HR %					
									2 HR %					
									2 HR %					
									2 HR %					
									2 HR %					
									2 HR %					
									2 HR %					
									2 HR %					
									2 HR %					
									2 HR %					
									2 HR %					
									2 HR %					
									2 HR %					
									2 HR %					
									2 HR %					
									2 HR %					
									2 HR %					
									2 HR %					
									2 HR %					
									2 HR %					
									2 HR %					
									2 HR %					
									2 HR %					
									2 HR %					
									2 HR %					
									2 HR %					
									2 HR %					
									2 HR %					
									2 HR %					
									2 HR %					
									2 HR %					
									2 HR %					
									2 HR %					
									2 HR %					
									2 HR %					
									2 HR %					
									2 HR %					
									2 HR %					
									2 HR %					
									2 HR %					
									2 HR %					

Data collected by: McElhanney
Report produced by: G. Li
Date: 3/28/2025
Checked by: A. McGill
Date: 3/28/2025

Vehicle Speed Summary

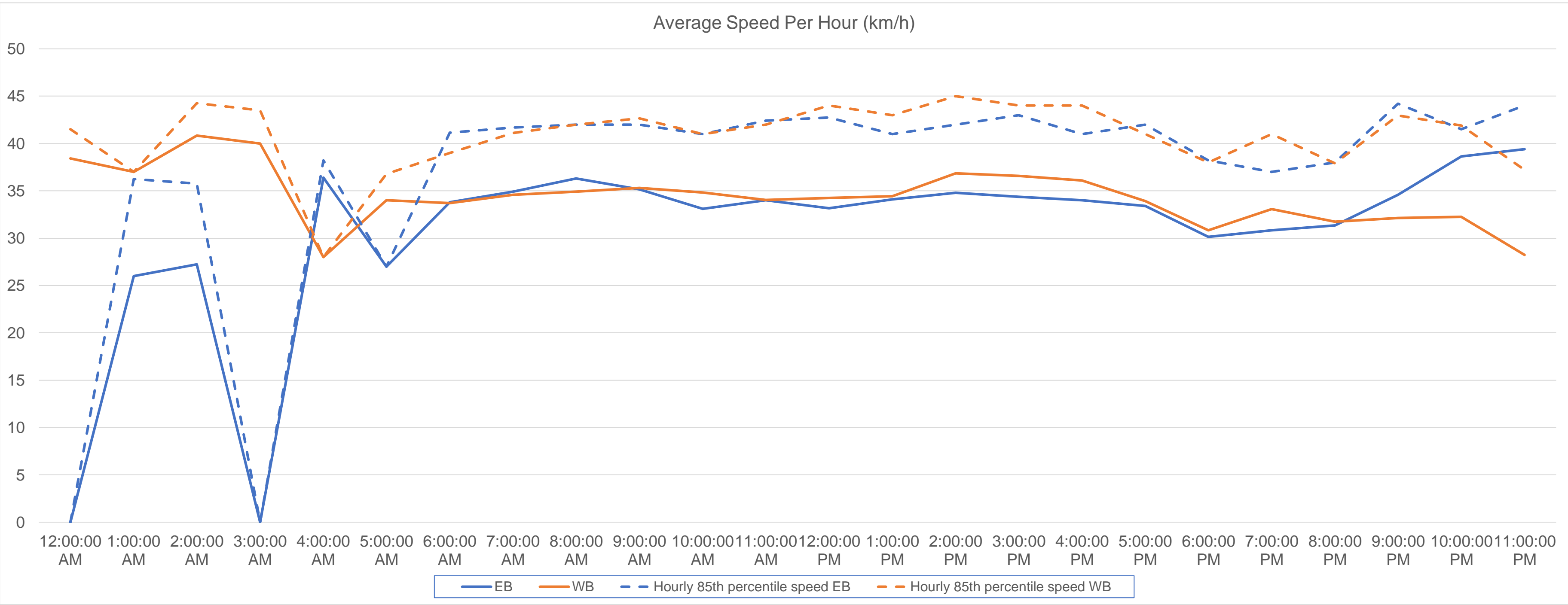


Station ID: R0008-01
Location: AGNES ST between GLANFORD AVE AND BROADWAY ST
Dates: 11/30/2024 to 12/6/2024

Bin Number	1	2	3	4	5	6	7	8	9	10	11	12	13	14
Bin Speeds	1-20	21-25	26-30	31-35	36-40	41-45	46-50	51-55	56-60	61-65	66-70	71-80	81-90	91-9999
Count Total	158	179	446	717	748	408	165	43	6	2	1	1	0	0
Percent Total	5%	6%	16%	25%	26%	14%	6%	1%	0%	0%	0%	0%	0%	0%

Movements	Above 30 km/h	Above 40 km/h	Above 50 km/h
EB	73%	20%	1%
WB	72%	23%	2%
Combined	73%	22%	2%

Movements	Average Speed	85th Percentile Speed	95th Percentile Speed
EB	34 km/h	42 km/h	46 km/h
WB	35 km/h	43 km/h	48 km/h
Combined	35 km/h	42 km/h	47 km/h



Vehicle Class Summary



Station ID R0008-01
Location: AGNES ST between GLANFORD AVE AND BROADWAY ST
Dates: 11/30/2024 to 12/6/2024

Classification	Motorcycle	Car & Light Goods Vehicles	Single Unit Truck	Buses	Multi-trailer truck
Length	0m to 2.30m	4.00m to 6.90m	6.00m to 10.50m	9.50m to 13.70m	9.50m to 23.70m

Movement	Classification					Total
	Motorcycle	Car & Light Goods Vehicles	Single Unit Truck	Buses	Multi-trailer truck	
EB	4	1579	11	5	0	1599
WB	2	1636	5	1	0	1644
Total	6	3215	16	6	0	3243
Percentage of Total	0.19%	99.14%	0.49%	0.19%	0.00%	100.00%